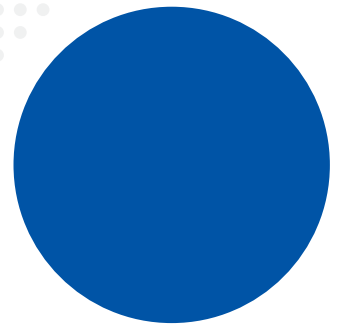
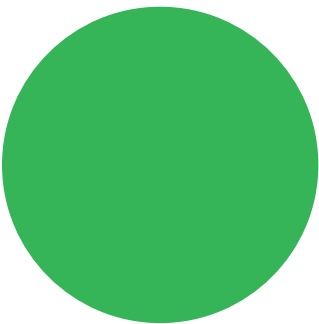


**2017**

# UCLA Fact Sheet



## COORDINATORS

---

**Wilsu Lieux**  
INBOUND COORDINATOR  
wlieux@ieo.ucla.edu

**Catalina Hurtado**  
OUTBOUND COORDINATOR  
churtado@ieo.ucla.edu

# APPLICATION PROCESS

---

Students must be selected by the partner university to participate in the UCLA Exchange program. We are unable to admit “free movers” through this program.

The partner university must submit the following documents to UCLA as part of the nomination process:

- A copy of the student’s transcripts
- Student’s Academic Plan\*
- Proof of English Proficiency

Upon UCLA’s approval, students will receive an email with the link for the online registration form.

\* **The Academic Plan should not be longer than one page and must list 10 courses the student wants to take at UCLA. Students should include the course title and number (e.g. Public Policy 10A: Introduction to Public Policy).**

## DEADLINES

---

### Deadlines

#### **Nomination by Partner: Fall Quarter: [March 1](#)**

The nomination form will be sent to the partners by email. Submissions will be accepted starting February.

#### **Application by Student: Fall Quarter: [May 1](#)**

Registration opens April 1.

#### **Winter Quarter: [October 1](#)**

Registration opens September 1.

## ACADEMIC CALENDAR

---

UCLA academic year is based on the quarter system: 3 terms, 10 weeks each. Please consult the [UCLA Academic Calendar](#) for more detailed quarter and holidays dates.

### TERM DATES FOR 2017-18:

Fall	September 25 – December 15
Winter	January 3 – March 23
Spring	March 28 – June 15

## LANGUAGE REQUIREMENTS

---

English language proficiency is required and proof of proficiency is to be submitted to UCLA by your university during the nomination process. Countries or institutions in which the language of instruction is English are exempted from these requirements, as are those students who are able to prove fluency through their university transcript.

**TOEFL:** minimum score of 550 (paper), 213 (computer) or 79 (internet)

**iELTS:** minimum score of 6.5

**iTEP:** minimum score of 5.0

# DS-2019 FORM AND J-1 VISA

---

Exchange students must obtain a J-1 Non-Degree Student visa to study at UCLA. Upon completion of the online registration, students will be instructed on how to request the DS-2019 form “Certificate of Eligibility for Exchange Visitor (J-1) Status” from UCLA, which they will take to a U.S. Embassy/Consulate to apply for a J-1 Non-degree Student Visa.

The following documents are required when requesting the DS-2019 form:

1. Copy of passport (photo page).
2. Financial documents showing available funds (see “Living Expenses”).
3. CFS (Confidential Financial Statement) – The form is available [here](#).

**IMPORTANT:** Per U.S. Immigration rules, all students must present physical copies of the entry documents after arrival in the U.S. Instructions will be sent to students about the check-in procedures.

## ORIENTATION & CAMPUS RESOURCES

---

Exchange students are required to complete a pre-arrival online orientation (iStart@UCLA) and attend a post-arrival IEO Welcome/Orientation event. Details will be sent by email to all incoming exchange students.

Exchange students will have access to a wide variety of campus services. This includes full library privileges, access to Bruin Online resources, access to the UCLA recreational facilities, and eligibility for discounts on bus passes, movie tickets, performances and cultural events.

## HOUSING

---

On-campus housing is available but not guaranteed. Exchange students must be enrolled full-time (12 or more units for undergraduates and 8 or more units for graduates) to apply for UCLA housing. If on-campus housing is not available, the [Community Housing Office](#) provides information about housing possibilities in the area, including apartments, rooms, hotels, and other accommodations. Other options include [www.solutionsinla.com](http://www.solutionsinla.com) and [www.zumahousing.com](http://www.zumahousing.com).

## HEALTH INSURANCE

---

### Health Insurance

Exchange students are required to purchase the UCLA Student Health Insurance Plan (SHIP) which meets immigration and campus requirements for J-1 visa holders. Fees for the 2017 – 2018 academic year will be available in June 2017.

**SHIP fees for the 2016 – 2017 academic year were as follows:**

DURATION	UNDERGRADUATE STUDENT	GRADUATE STUDENT
One Quarter	\$ 795.98	\$ 1,293.36
Two Quarters	\$ 1,591.96	\$ 2,586.72
Three Quarters	\$ 2,387.94	\$ 3,880.08

Exchange students enrolled in SHIP are eligible for services at the [Arthur Ashe Student Health and Wellness Center](#), [Counseling and Psychological Services](#), and the [UCLA Medical Center](#).

Exchange students accompanied by dependents must obtain independent health insurance coverage for each dependent.

# LIVING EXPENSES

---

## Living Expenses

Exchange students do not pay tuition at UCLA, but they are responsible for living expenses, health insurance and orientation fees. All fees are subject to change.

### Approximate Living Expenses Estimate (2017 – 2018)

DURATION	AMOUNT FOR STUDENT	AMOUNT FOR SPOUSE	AMOUNT PER CHILD
One Quarter	\$ 6,500	\$ 1,500	\$ 700
Two Quarters	\$ 13,000	\$ 3,000	\$ 1,400
Three Quarters	\$ 19,500	\$ 4,500	\$ 2,100

### Acceptable financial documents include:

#### Personal funds:

A recent bank statement or bank letter showing available funds. The student must be the account holder.

#### Family funds:

A recent bank statement or bank letter having a family member as the account holder and showing available funds.

#### Funds from UCLA:

A copy of fellowship, grant, or assistantship award letters or a letter specifying the type, amount, and duration of award from the appropriate department.

#### Funds from government or other sponsoring agency:

A signed copy of the scholarship or award letter which states the amount and duration of the award.

# COURSES

---

## Course Enrollment

A schedule of classes\* and a course catalog (which includes course descriptions) are available at [www.registrar.ucla.edu](http://www.registrar.ucla.edu).

**\*Please note that NOT all courses are open to exchange students. Professional schools of Law, Management, Dentistry, Medicine, and Nursing are not part of the exchange program.**

Additionally, some undergraduate academic departments have course restrictions, such as Theater, Film and Television; Economics\*\*, Mathematics, Physical and Life Sciences, Engineering, and Applied Sciences. This may result in your inability to enroll in specific courses. You are encouraged to thoughtfully select courses and remain flexible as enrollment is a highly competitive process.

**\*\*The UCLA Economics Department will only allow exchange students who are declared Economics major at their home university to enroll in Economics courses.**

Please check the list of Restricted Courses to avoid including them in your Academic Plan.

Students can look through the [UCLA General Catalog](#) and the [Schedule of Classes](#) from previous quarters to make their course selection. Please note that some courses are restricted to UCLA students only. The Academic Plan will be used for assistance with course placement and does not guarantee enrollment.

# RESTRICTED COURSES

---

Professional Schools are not part of the exchange program. So, you will not be able to take classes from:

- School of Law
- School of Nursing
- School of Medicine
- School of Dentistry
- Anderson School of Management

**NOTE:** Some UCLA departments have restricted courses, which are not available to exchange students. *(This list is subject to change)*

## Bioengineering

- 167L – Bioengineering Laboratory
- 177A – Bioengineering Capstone Design I
- 177B – Bioengineering Capstone Design II
- 180L – System Integration in Biology, Engineering, and Medicine I Laboratory
- 188 – Special Courses in Bioengineering
- 298 – Special Studies in Bioengineering

## Economics

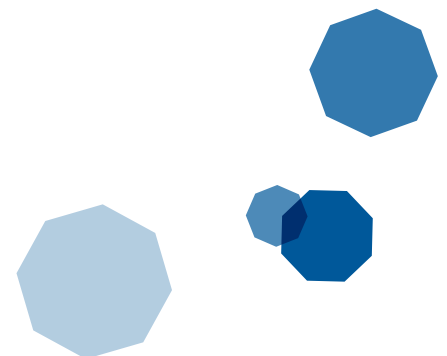
**ONLY** exchange students who are Economics majors at their home university can enroll in Economics courses at UCLA. However, the following courses are restricted to exchange students.

- |   |  |
|---|--|
| 11 – Microeconomic Theory                 | 106FB – Finance Lab                                      |
| 41 – Statistics for Economics             | 106G – Introduction to Game Theory                       |
| 101 – Microeconomic Theory                | 106GL – Introduction to Game Theory Lab                  |
| 102 – Macroeconomic Theory                | 106M – Financial Markets and Financial Institutions      |
| 1033 – Introduction to Econometrics       | 106ML – Financial Markets and Financial Institutions Lab |
| 103L – Econometrics Lab                   | 106T – Economics of Technology and E-Commerce            |
| 106D – Designed Markets                   | 106TL – Economics of Technology and E-Commerce Lab       |
| 106DL – Designed Markets Lab              | 106V – Investments                                       |
| 106E – Economics of Entrepreneurship      | 173A – Introduction to Social Entrepreneurship           |
| 106EL – Economics of Entrepreneurship Lab | 173B – Introduction to Social Entrepreneurship           |
| 106F – Finance                            |  |

## Film and TV

**ALL** courses are restricted, **EXCEPT** the following. You are welcome to enroll in these courses if space is available.

- FTV 122 series – Production (All courses in this series)
- FTV 132 – Screenwriting
- FTV 133 – Screenwriting
- FTV 106A – American Film History
- FTV 106B – European Film History
- FTV 106C – History of Asian, Latin American and African Film
- FTV 108 – Documentary Film
- FTV 110A – History of Broadcasting
- FTV 112 – Film and Social Change



# IMPACTED COURSES

---

The following Engineering undergraduate courses are impacted, but if you want to take one or more of these courses and you are not able to enroll through MyUCLA, you can submit the Enrollment Consideration Request (ECR) Form. The department will contact you to let you know the status of your request.

## Bioengineering

Bioengineering 100  
Bioengineering CM103  
Bioengineering C107  
Bioengineering 120  
Bioengineering C139A  
Bioengineering C M140  
Bioengineering C147  
Bioengineering C171  
Bioengineering 180  
Bioengineering C183

## Electrical Engineering

Electrical Engineering M16  
Electrical Engineering 100  
Electrical Engineering 110L  
Electrical Engineering 113D  
Electrical Engineering 114  
Electrical Engineering 115AL  
Electrical Engineering M116C  
Electrical Engineering M116L  
Electrical Engineering 141  
Electrical Engineering 142  
Electrical Engineering 164L  
Electrical Engineering M171L  
Electrical Engineering 180D  
Electrical Engineering 184DB

## Civil and Environmental Engineering

Civil and Environmental Engineering 15  
Civil and Environmental Engineering 101  
Civil and Environmental Engineering 123  
Civil and Environmental Engineering 128L  
Civil and Environmental Engineering 129L  
Civil and Environmental Engineering 130L  
Civil and Environmental Engineering 156B  
Civil and Environmental Engineering M166

## Computer Science

Computer Science 31  
Computer Science 32  
Computer Science 35L  
Computer Science M51A  
Computer Science 111  
Computer Science M117  
Computer Science 118  
Computer Science 130  
Computer Science 131  
Computer Science 133  
Computer Science 143  
Computer Science M151B  
Computer Science M152A  
Computer Science 152B  
Computer Science 170A  
Computer Science 174A  
Computer Science 180  
Computer Science 181  
**Chemical Engineering**  
Chemical Engineering 101B  
Chemical Engineering 102A  
Chemical Engineering 104A  
Chemical Engineering 104B  
Chemical Engineering 104D  
Chemical Engineering 104DL  
Chemical Engineering 107  
Chemical Engineering 108A

## Engineering

Engineering 113  
Engineering 183EW  
Engineering 185EW

